

ULTRA FILTRATION SYSTEM

Installation and Maintenance Manual



Read through all the instructions before installing and using the unit.

INTRODUCTION

We would like to thank you for choosing the Ultra filtration System. This is our standard 5-stage filtration unit. Our unit has been manufactured to strict quality standards to ensure you receive the best product possible. This unit is your first step to cleaner, healthier and better tasting water. The stages and their functions are outlined below.

First Stage: Spun PP Filter – removes larger particles suspended in water.

Second Stage: Granular Carbon Filter – removes organics , chlorine, odor, and turbidity.

Third Stage: Block Carbon Filter – further removes any organics, chlorine, odor and turbidity.

Fourth Stage: UF Membrane – removes suspended particles, turbidity, bacteria and other harmful substances.

Fifth Stage: Inline Carbon Filter (post filter) – adjusts the taste of treated water.

PACKAGE CONTENTS

Ultra filtration System – 1 pc

Food Grade Tubing – 2 pcs (White and Blue)

Faucet – 1 pc

Accessories – Tube Plug, Screws, Tee Fitting, Feed Water Valve

UF Membrane – 1 pc

Manual – 1 pc

TECHNICAL SPECIFICATIONS

Inlet TDS: $\leq 250\text{ppm}$

Chlorine Level: $\leq 0.2\text{ppm}$

Inlet Water Pressure (min/Max): 14.5 - 43.5 psi

Inlet Water Temperature (min/Max): 5°C - 45°C

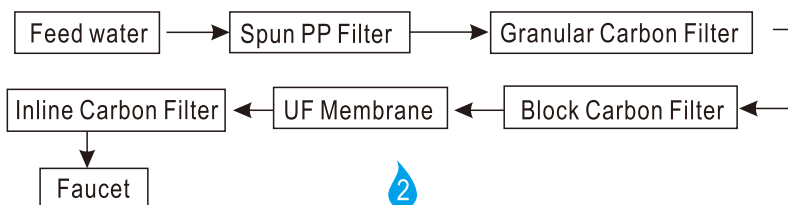
BEFORE YOU START

- Read through all instructions before beginning installation and using this system. Follow all steps exactly or risk damaging system/incorrect operation.
- This system contains filters that need to be replaced at certain intervals. Replacement intervals will vary according to use, please contact your local dealer for details.
- Please install system on potable water only . On non-potable water sources, system will not function properly and additional pre-treatment may be needed.
- Ensure source water pressure is between **14.5 - 43.5 psi**. If source water pressure exceeds maximum pressure a pressure reduction valve may be needed, consult your local dealer.
- Ensure source water temperature is between **5°C - 38°C**. System will not function properly if these temperatures are exceeded. **DO NOT INSTALL ON HOT WATER SOURCE.**
- Do not use system on noticeably contaminated water such raw sewage or well water.

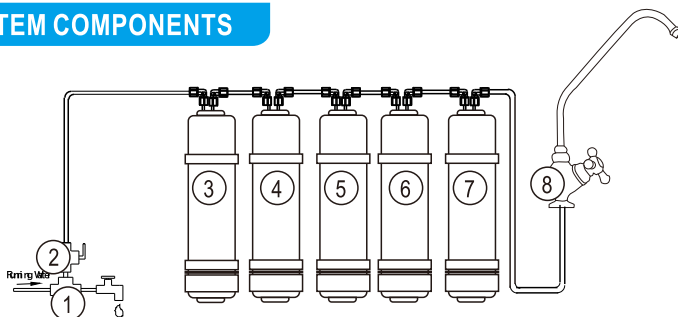
CAUTION:

- Do not disassemble, open, or modify this unit. Tampering with the unit may cause failure or damage and will void warranty.
- Do not cover the unit, as this will prevent proper heat dissipation and can cause damage or fire.

HOW YOUR SYSTEM WORKS



SYSTEM COMPONENTS

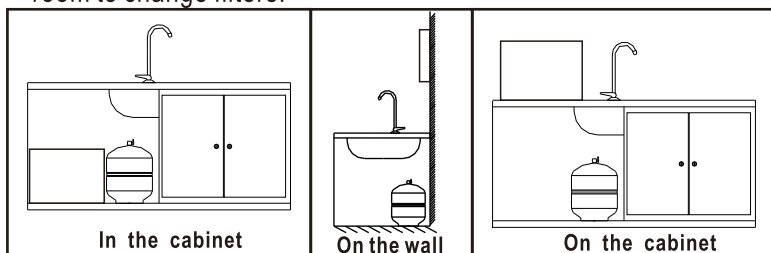


- | | | |
|---------------------------|---------------------------|------------------|
| 1. Tee Fitting | 2. Feed Water Valve | 3. PP Spun Fiber |
| 4. Granular Carbon Filter | 5. Block Carbon Cartridge | |
| 6. UF Membrane | 7. Inline Carbon Filter | 8. Faucet |

INSTALLATION

Unit placement

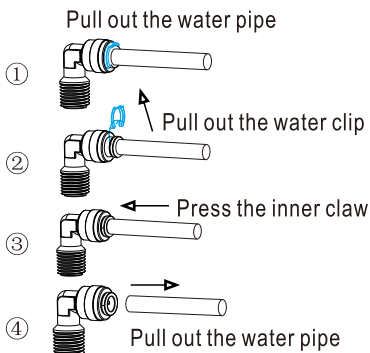
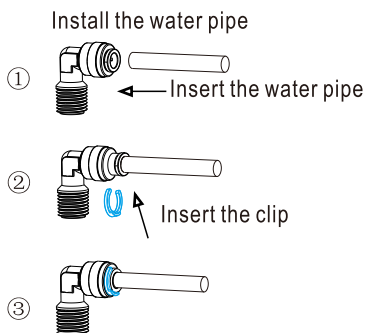
- The unit can be placed flat or upright and on top, inside, or under the cabinet. Feed Water connection should be as close as possible to unit. However, if due to space or other limitations, this unit can be placed where it is convenient.
- When choosing a location for the unit, remember to have easy access to cold water line, drain pipe, power outlet, and enough room to change filters.



NOTE: All components and tubing should be located in an area not exposed to freezing temperatures or direct sunlight.

⦿ Tubing Connection

Quick Fitting



⦿ Feed Water Valve and Tee Fitting

Install Tee Fitting and Feed Water Valve as per diagram.

Wrap threads of Feed Water Valve and Tee Fitting with Teflon tape.

Connect White Feed Water Tubing from unit to Feed Water Valve.

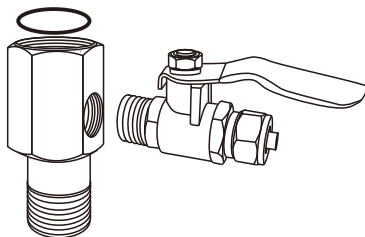
Install the Feed water valve

Install the Feed water valve Tee fitting, and then connect to source water.

Caution: The water supply to your unit **MUST** be from **COLD WATER LINE**.

NOTE:

Use only a cold potable water supply as Feed Water, hot water will damage your unit. Softened Feed Water will extend the life of the RO Membrane .

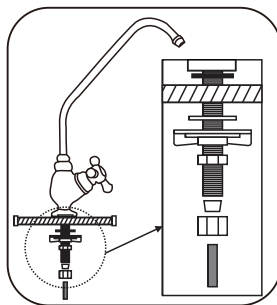


⦿ Faucet Installation

- 💧 Select a convenient location near your sink to place the faucet.
- 💧 Drill a hole 12mm in diameter in counter top.
- 💧 Place washers, plates, seals and nuts in order as per diagram and tighten on to counter.

- Attach **Blue Pure Water** tubing to the bottom of faucet and connect tubing to unit.

CAUTION: Check that tubing is connected correctly according to Connection Diagram at beginning of section.



MAINTENANCE

Filter Maintenance

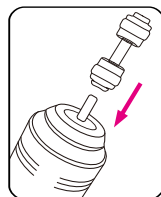
To ensure the unit operates at its optimum level, routine maintenance is required. The frequency of maintenance depends on the feed water quality and amount of system usage. The following are some guidelines for scheduled filter changes, keep in mind the frequency of filter changes may vary. If in doubt, contact your local dealer or service technician.

- Change Spun PP Filter every 3-6 months or as required
- Change Block Carbon Filter every 6-12 months or as required.
- Change Granular Carbon Filter every 6-12 months or as required.
- Change UF Membrane every 12-24 months or as required.
- Change Inline Carbon Filter every 6-12 months or as required.

If you will be away or not using the unit for an extended period of time, please disconnect unit from power supply. If the unit has been shut down and not used for an extended period of time, perform the same flushing procedure as in the initial set up.

Filter Replacement

- Close Feed Water Valve.
- Open Faucet and drain any remaining water from system.
- Disconnect quick connect filters.
- Replace filters, reconnect, and open valves.
- Perform pre-filter flush after filters have been changed.



Note: Diagrams on how to connect using quick connect fittings can be found in the installation section.

TROUBLESHOOTING

PROBLEM	CAUSE	SOLUTION
Not producing water	Pre-filter carbon cartridge clogging	Replace the cartridge
	UF Membrane clogging	Replace the UF Membrane
	Inlet water Valve is closed	Open the inlet water valve
	Running Water is closed	Open the running water

SAFETY INSTRUCTIONS

This appliance is intended to operate and function as per the instructions in this manual. It is not designed to operate outside of the specifications listed and any attempt to do so or tamper with the unit can cause damage to the unit and/or bodily harm. This unit is not a toy keep out of reach from small children. If the unit requires service or repair, please contact your local service technician or sales representative.

- 💧 Please ensure feed water temperature is over 4°C. Using water below 4°C can cause ice to form and damage the unit.

Good water, Diamond life

